

# Yamhill Springs Vineyards

- ◆ Yamhill Carlton AVA
- ◆ 40 acres total
- ◆ 15acre vineyard
- ◆ 400 - 595 elevation
- ◆ Jory / Bellpine soils
- ◆ Pinot Noir, Chardonnay, Pinot Gris
- ◆ Additional vineyard suited land
- ◆ 3400 sq. ft. home
- ◆ \$1,300,000

© 2018 Google



All property boundaries are approximate

**Oregon Vineyard Property**

Vineyard Brokers

Since 1998

503-625-3000

[www.oregonvineyardproperty.com](http://www.oregonvineyardproperty.com)

*Premiere*  
**PROPERTY**  
*Group, LLC*





Yamhill Springs  
Vineyards





# Yamhill Springs Vineyards

## Planting Block Map

Pinot Noir 115 -	2.73 acres
Pinot Noir WAD -	6.62 acres
Pinot Noir POM -	1.25 acres
Pinot Noir 777-	0.67 acres
Pinot Noir 113 -	0.78 acres
Pinot Gris -	2.53 acres
Chardonnay 108 -	0.50 acres
<b>Total acres</b>	<b>15.0 acres</b>

Each of these blocks has .25 acres of Chardonnay 108 clone  
Total approx. .5 acres

Pinot Noir  
Pommard  
Planted in 2018  
4 X 7  
1.25 acres

Pinot Gris  
Planted in 1994  
4 X 7  
2.53 acres

Pinot Noir  
115 - 3309  
Planted in 2000  
meter X 7  
2.73 acres

Pinot Noir  
Wadenswil  
Planted in 1988 - 1989  
4 X 7  
6.62 acres

Pinot Noir  
777  
Planted in 1988  
4 X 7  
.67 acres

Pinot Noir  
113  
Planted in 1988  
4 X 7  
.78 acres

Greenfoot Rd

© 2018 Google

All property boundaries are approximate  
All acreages based on information provided by owner



**Oregon Vineyard Property**

Vineyard Brokers  
Since 1998  
503-625-3000

Premiere  
PROPERTY  
Group, LLC

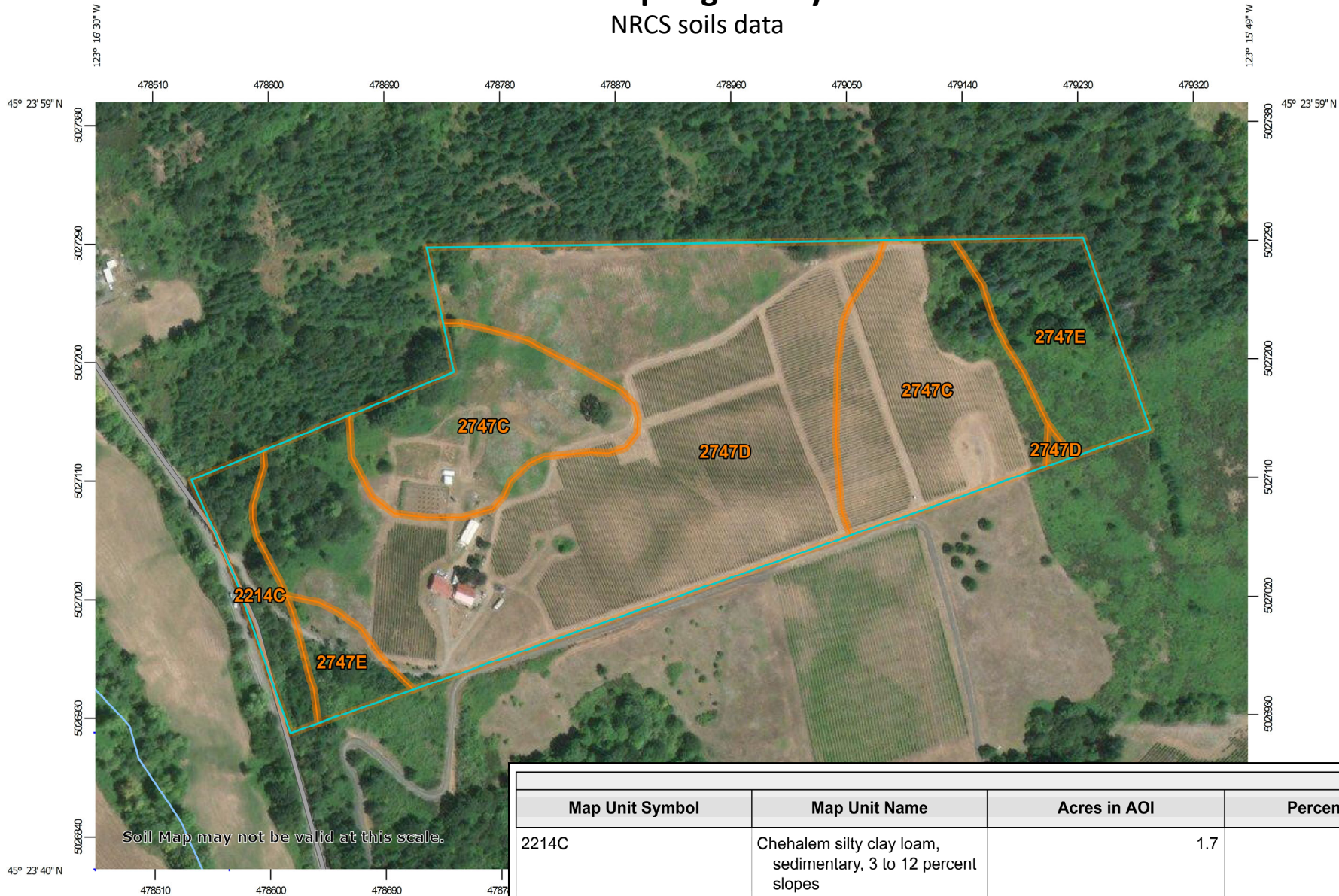
[www.oregonvineyardproperty.com](http://www.oregonvineyardproperty.com)





# Yamhill Springs Vineyards

## NRCS soils data



Soil Map may not be valid at this scale.

Map Scale: 1:4,100 if printed on A landscape (11" x 8.5") sheet.



Map projection: Web Mercator Corner coordinates: WGS84 Edge t

Map Unit Symbol	Map Unit Name	Acres in AOI	Percent of AOI
2214C	Chehalem silty clay loam, sedimentary, 3 to 12 percent slopes	1.7	4.3%
2747C	Jory-Bellpine complex, 2 to 12 percent slopes	11.4	28.3%
2747D	Jory-Bellpine complex, 12 to 20 percent slopes	22.6	56.1%
2747E	Jory-Bellpine complex, 20 to 30 percent slopes	4.6	11.3%
<b>Totals for Area of Interest</b>		<b>40.2</b>	<b>100.0%</b>



Menefee  
County Park

Severt Creek

NW Dobson Rd

NW Turner Creek Rd  
Turner Creek

Hay Creek

NW Turner Creek Rd

Yamhill Springs  
Vineyard

400

Greenhoot Rd

600

Hawn Creek

Hawn Creek

Wildwood Creek

Wildwood Creek

NW Greenhoot Rd

NW Turner Creek Rd

400

NW Turner Creek Rd

Turner Creek

All property boundaries are approximate

Terrain   
View topography and elevation



**Oregon Vineyard Property**  
 Vineyard Brokers  
 Since 1998  
 503-625-3000  
[www.oregonvineyardproperty.com](http://www.oregonvineyardproperty.com)

*Premiere*  
**PROPERTY**  
 Group LLC



In the Coastal Foothills  
Yamhill Carlton AVA



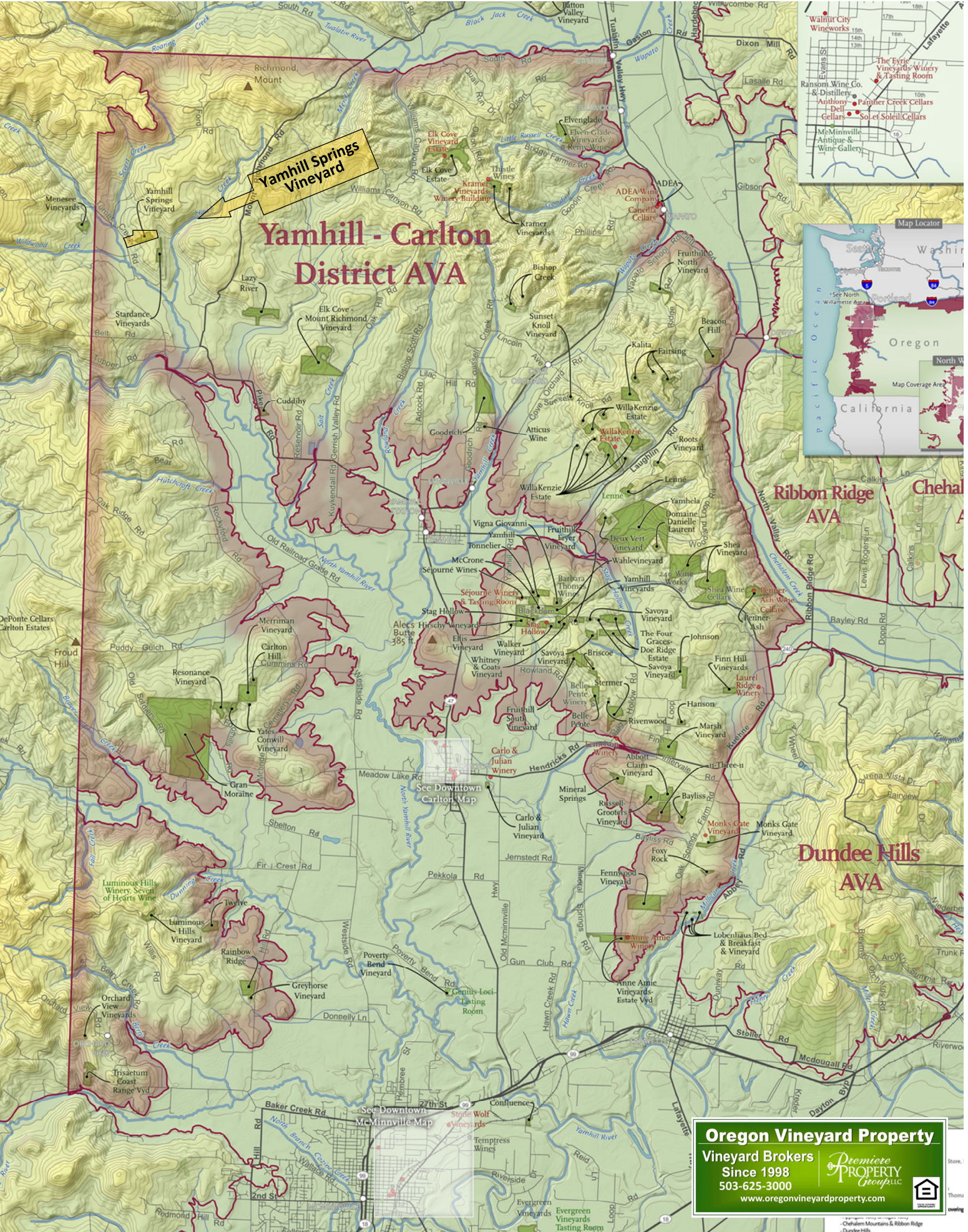






# Yamhill - Carlton District AVA

**Yamhill Springs Vineyard**



**Oregon Vineyard Property**  
 Vineyard Brokers  
 Since 1998  
 503-625-3000  
[www.oregonvineyardproperty.com](http://www.oregonvineyardproperty.com)

*Premiere* PROPERTY GROUP, LLC

-Chehalis Mountains & Ribbon Ridge  
-Dundee Hills





**Yamhill Springs Vineyard**

**Oregon Vineyard Property**  
 Vineyard Brokers  
 Since 1998  
 503-625-3000  
[www.oregonvineyardproperty.com](http://www.oregonvineyardproperty.com)